

# The impact of the new CAP in grazing systems

Thomas G. Papachristou  
Forest Research Institute  
HAO - "Dimitra"



Grazing land under active farm

...a range of vegetation  
types

# Permanent Grassland (CAP 2015-2020)

Permanent grassland definition (Reg. 1307/ 2013):

*Permanent grassland and permanent pasture, together referred to as "permanent grassland" means land used to grow grasses or other herbaceous forage naturally (self-sown) or through cultivation (sown) and that has not been included in the crop rotation of the holding for five years or longer; it may include other species such as shrubs or trees which can be grazed provided that the grasses and other herbaceous forage remain predominant as,*

*Member States so decide, land which can be grazed which forms part of established local practices where*

# Permanent Grassland (CAP 2015-2020)

## Member States shall:

Establish criteria to be met by farmers  
in order to fulfill the obligation to  
maintain a land for grazing

Define the minimum activity to be  
carried out on lands naturally kept in a  
state suitable for grazing

Define established local practices...

# Practices beneficial for the climate and the environment

- Crop diversification
- Maintaining existing permanent grassland
- Ecological focus area on the agricultural area

## **Equivalent practices to maintenance of permanent grassland**

### **1.) Management of meadows or pastures**

- Cutting regime or appropriate mowing (dates, method, limits)
- Maintenance of landscape features on permanent grassland and control scrub

## **ivalent practices to maintenance of permanent grassland**

**) Management of meadows or  
pastures**

**➤ Specified grass varieties and/ or  
seeding regimes for renewal  
depending on the grassland type,  
with no destruction of high nature  
value**

## **divalent practices to maintenance of permanent grassland**

### **) Management of meadows or pastures**

- Appropriate management for  
steep slopes**
- Fertilizer regime**
- Pesticide restrictions**



## **divalent practices to maintenance of permanent grassland**

### **)Extensive grazing systems**

- **Extensive grazing (timing, maximum stocking density)**
- **Shepherding or mountain pastoralism**
- **Using local or traditional breeds for grazing the permanent**

Equivalent practices with ecological  
focus are

---

Conversion of arable land into  
permanent grassland extensively  
used

izing land decline and the loss of  
cosystems dependent on farming

AP mechanisms to maintain  
stures...Prevent the conversion  
arable land...but...  
he main threats:  
Intensification (reseeding/  
Fertilization of meadows)

A photograph of a rolling green landscape with a white building in the distance under a blue sky with clouds. The text is overlaid on the image.

## Role of the CAP

Direct payments have to ensure continued active farming use of structures

Special care must be taken to ensure that rules and regulations are not biased against:

- ✓ their continued use
- ✓ the maintenance of their special

## Role of the CAP

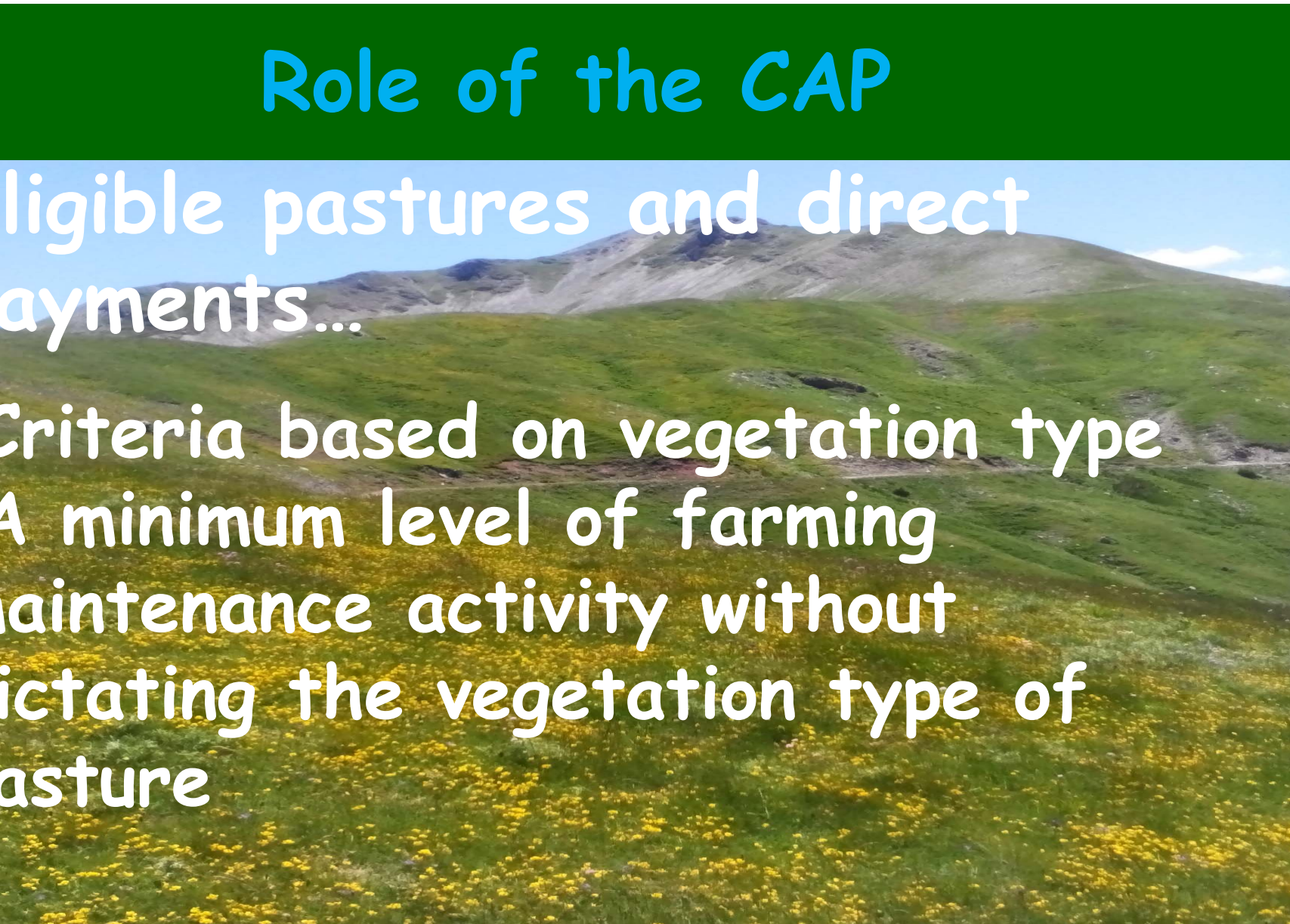
Eligible pastures and direct payments...

Criteria based on vegetation type

A minimum level of farming maintenance activity without

dictating the vegetation type of

pasture

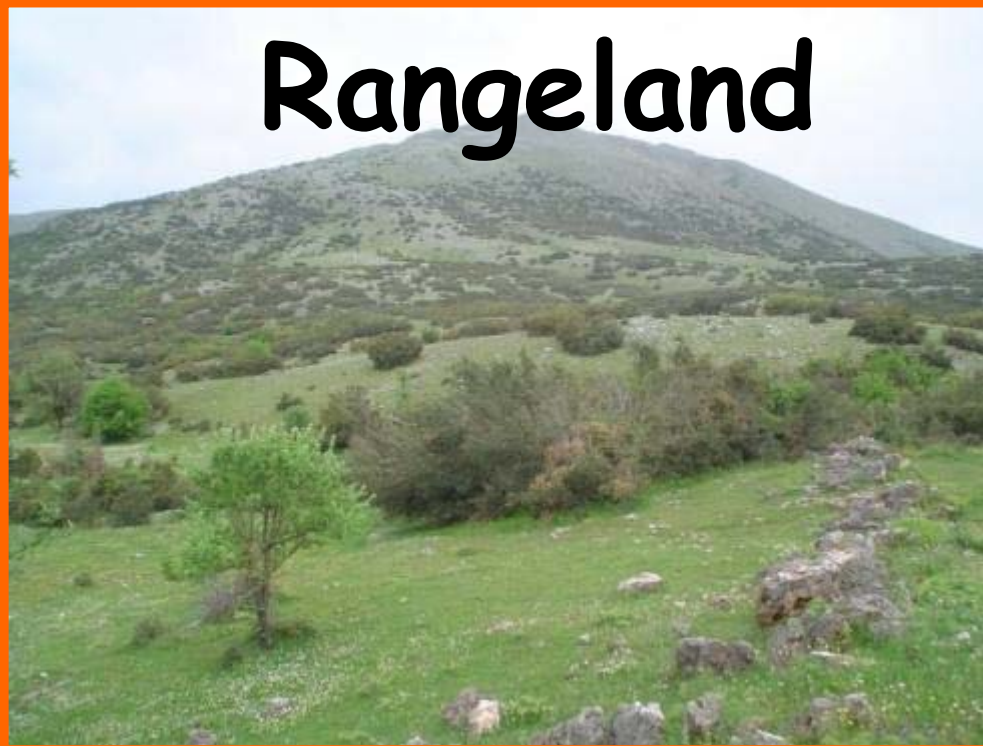


---

# The case of Greece

Rangeland (or  
grazing land or  
permanent pasture)  
uncultivated  
land

## Rangeland



Pastureland

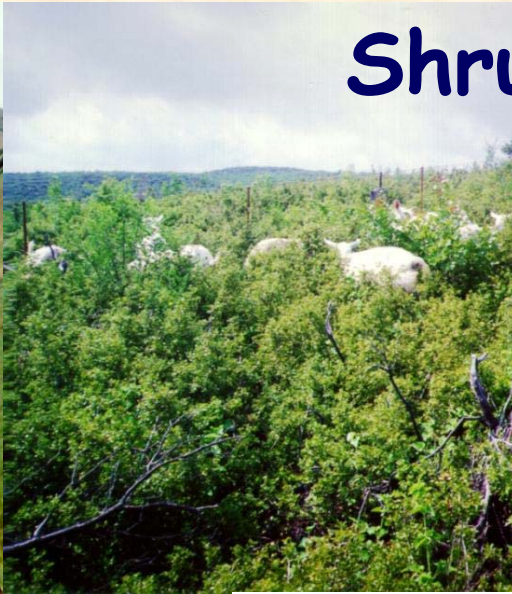
Pastureland is  
cultivated land

# Types of Greek rangelands

**Pasturelands**



**Shrublands**



**Forest ranges**



**Phrygantic lands**





# Grazing animals



47.555  
heads



4.018.037  
heads



8 749 175

# Identification of eligible grasslands

Management plan for each municipality

- ◆ Classification of rangelands
- ◆ Carrying capacity
- ◆ Livestock and grazing conditions
- ◆ Stocking rate
- ◆ Facilities (watering holes, shade shelters, stables, roads)
- ◆ Rangeland condition / vegetation

# Location of permanent grasslands

**KYA 943/26-5-2015**

**873/55993/20-5-2015)**

**Permanent grassland is a part of rangelands**

**Selection of farmers who are approved as eligible**

**Distribution rate of permanent grassland  
(AUs/ permanent grassland)**



**Feeding rate**

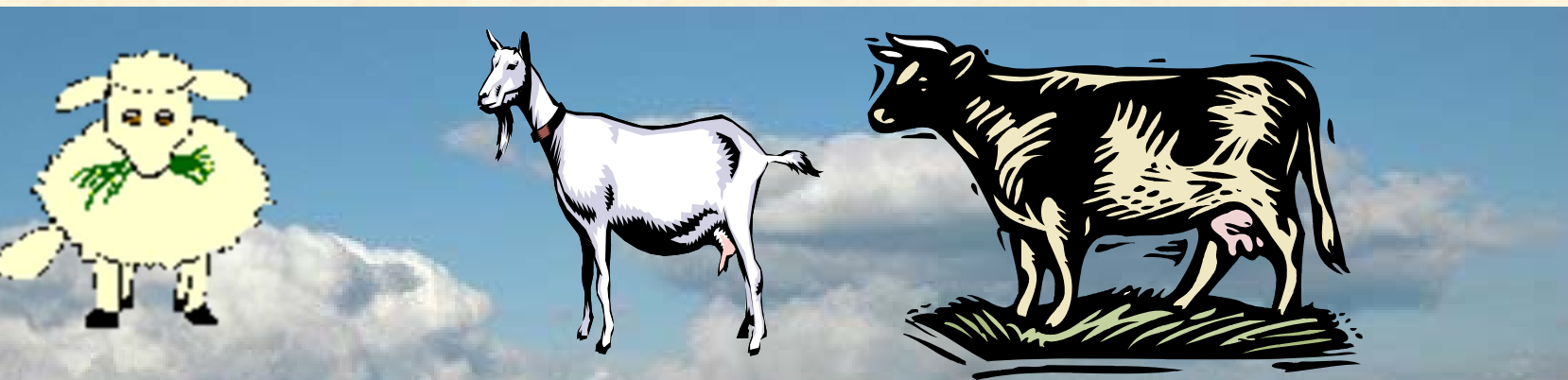


**is determined by management**

**is determined by soil type and condition, plant type and condition, temperature and rainfall**



# ngeland condition & improving



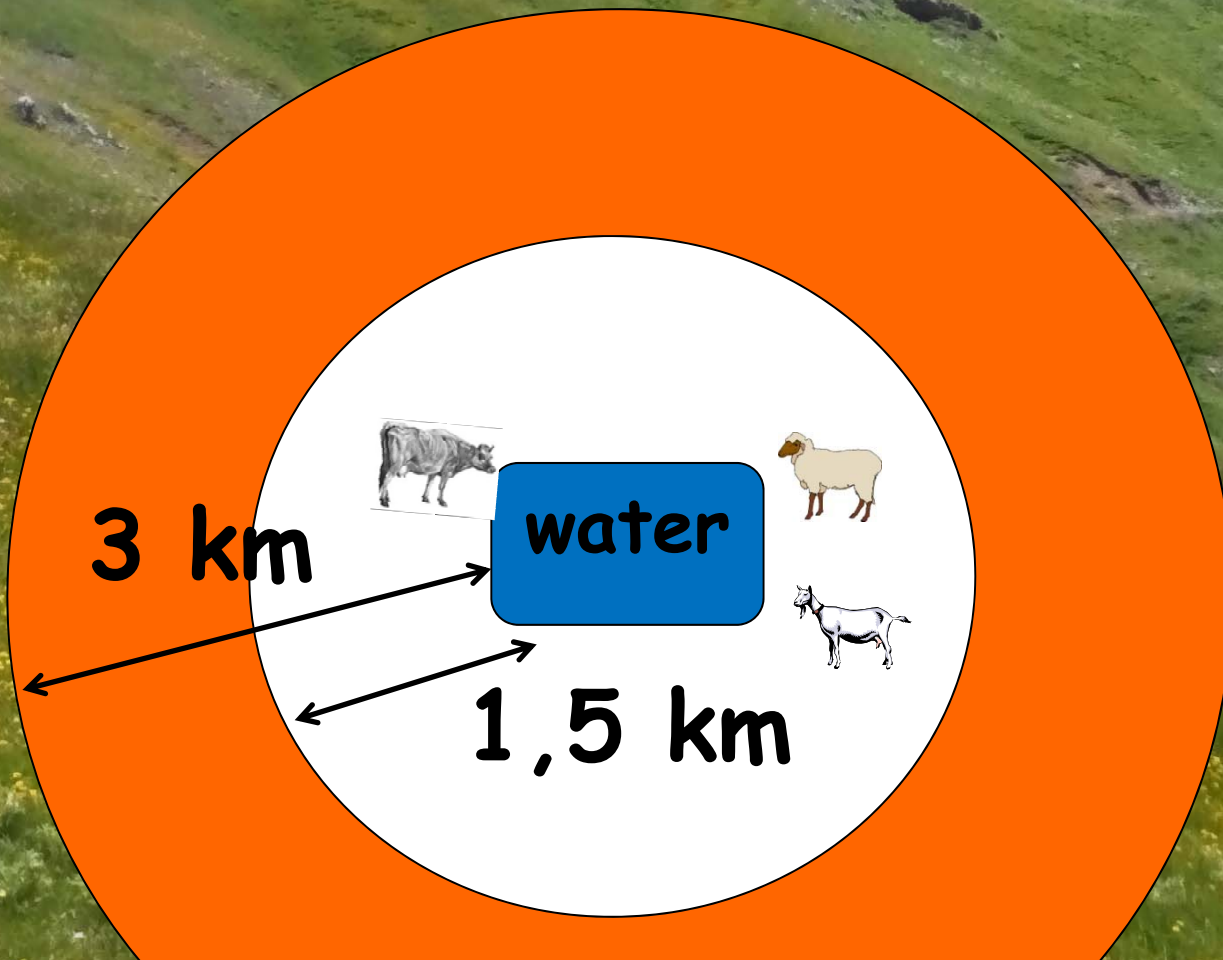
## ❖ Grazing

- ❖ Vegetation management
- ❖ Complementary pastures
- ❖ Complementary feeds

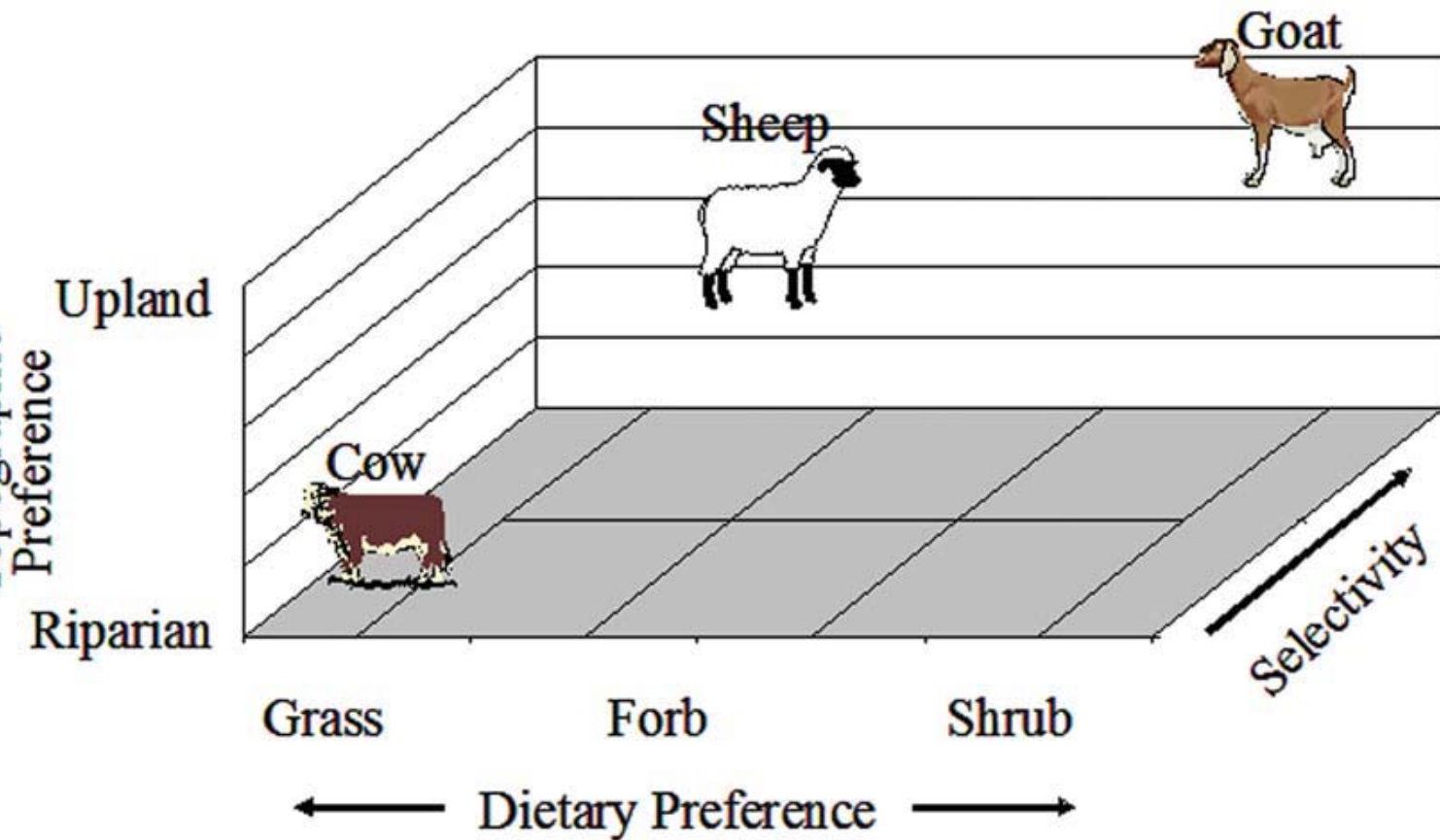
# Rangeland facilities



# Watering as a management tool



# Use of rangelands by animal species





# Use of rangelands by cattle

Slope	Use
> 60%	0%
31-60%	40%
11-30%	70%
< 10%	100%



A shepherd in a brown coat and hat is herding a flock of sheep on a rocky, grassy hillside. The sheep are scattered across the slope, some grazing and some resting. The shepherd is in the foreground, holding a long wooden staff. The background shows a vast, open landscape with more sheep and rocky terrain under a clear sky.

# Benefits from the shepherding

Animals have choices

Regulate the intake of nutrients and toxins

All plants are used

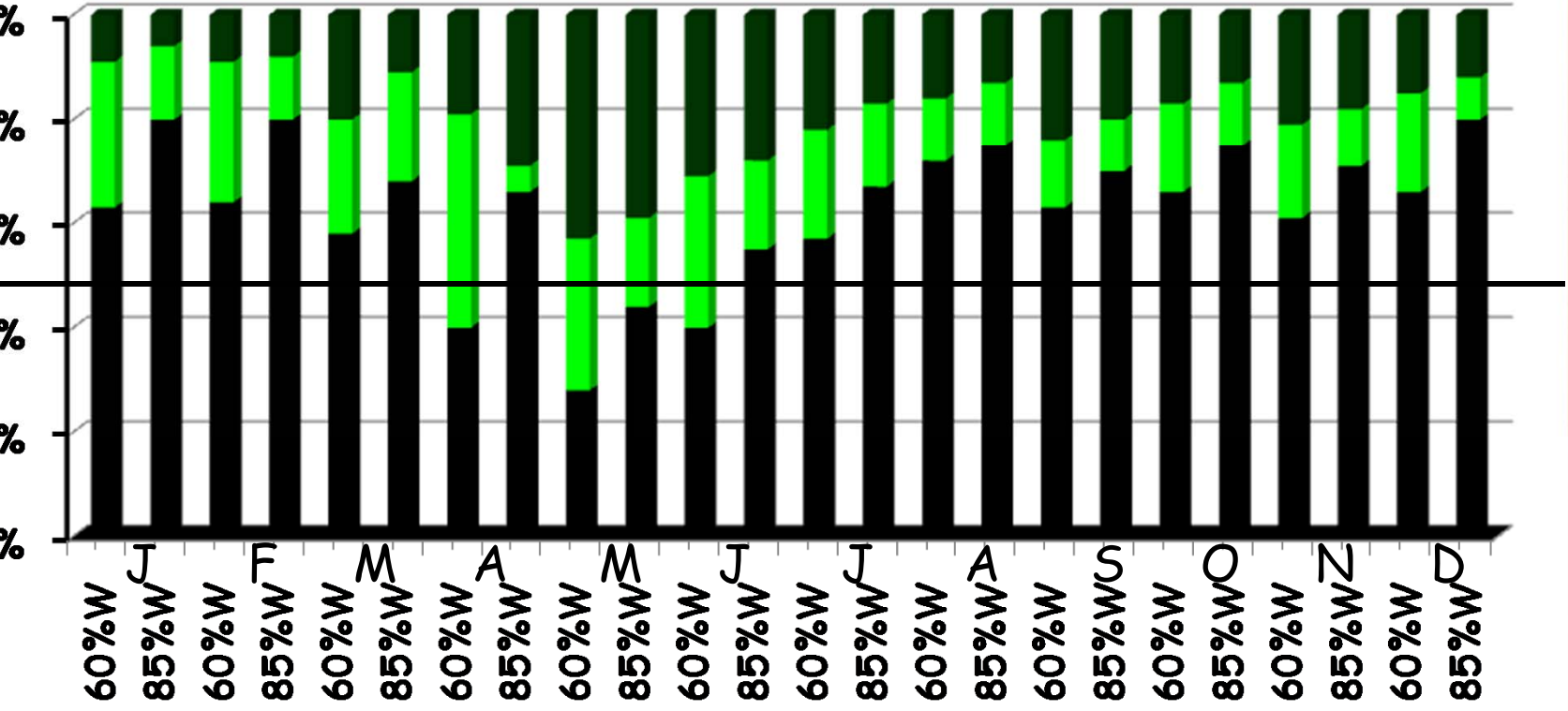
Maintain and enhance

# Flooded pastures and goats (a local practice)



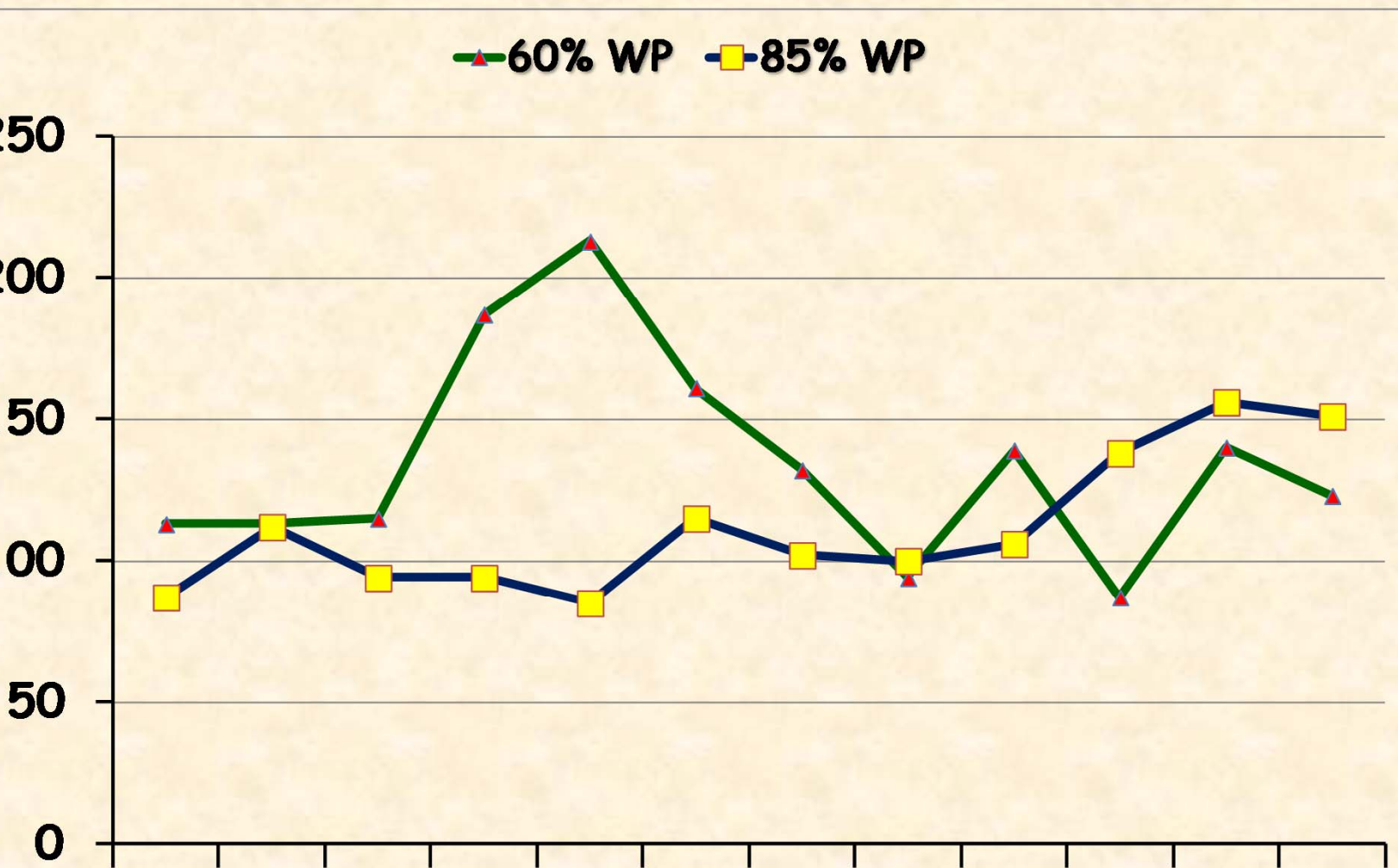
# Use of browse by goats

■ browse ■ grasses ■ forbs



60%W: 60% shrubs vs 40% forbs

# Use of browse by goats





grass  
forbs  
Kermes oak  
browse



grass  
forbs  
Kermes oak  
browse

# Browse and health of goats

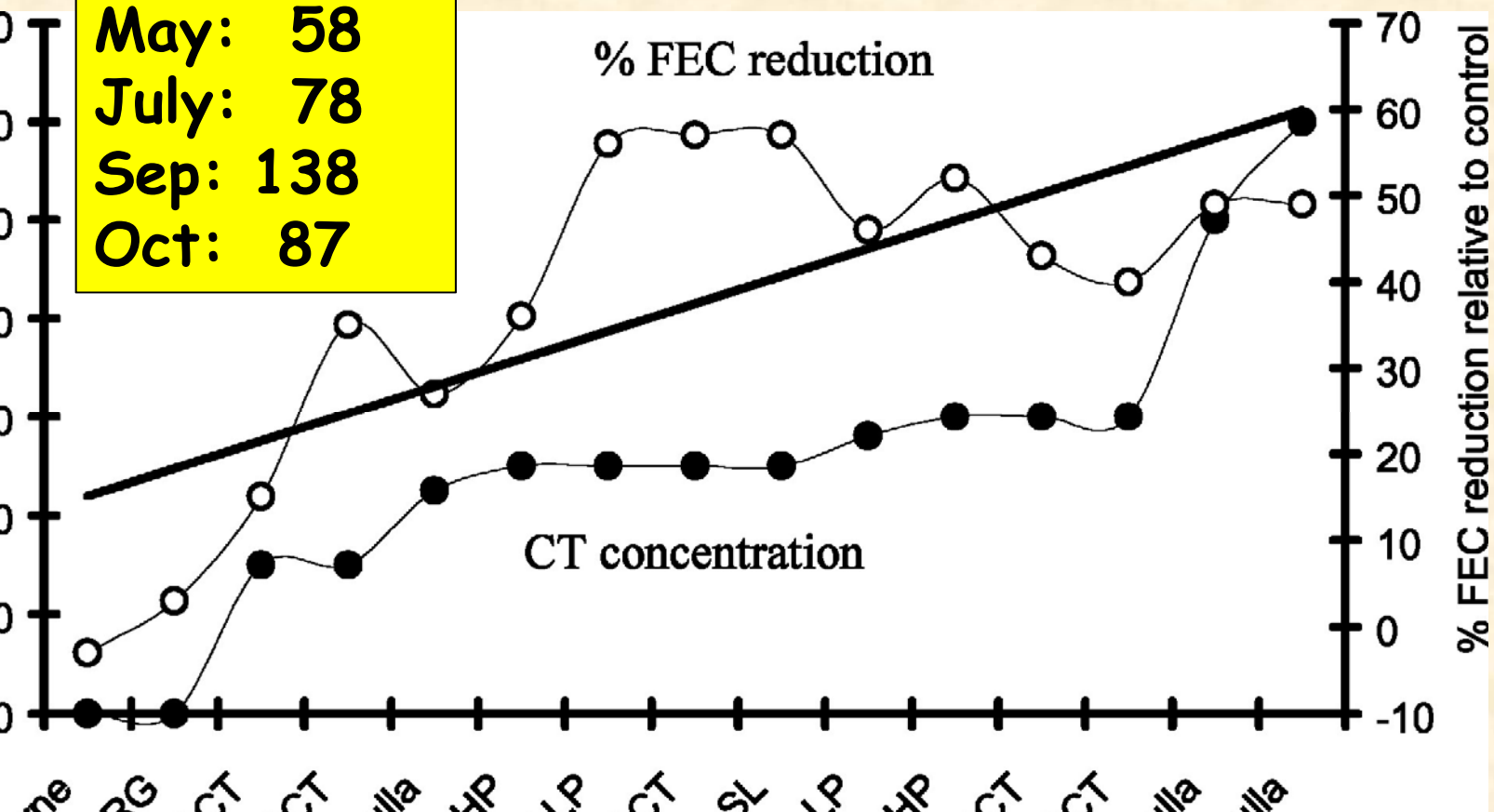
## Kermes oak

May: 58

July: 78

Sep: 138

Oct: 87



# Forage resource combination

D.M. (kg/ha)



Hay



Forest range



Pastureland



Cereal stubble

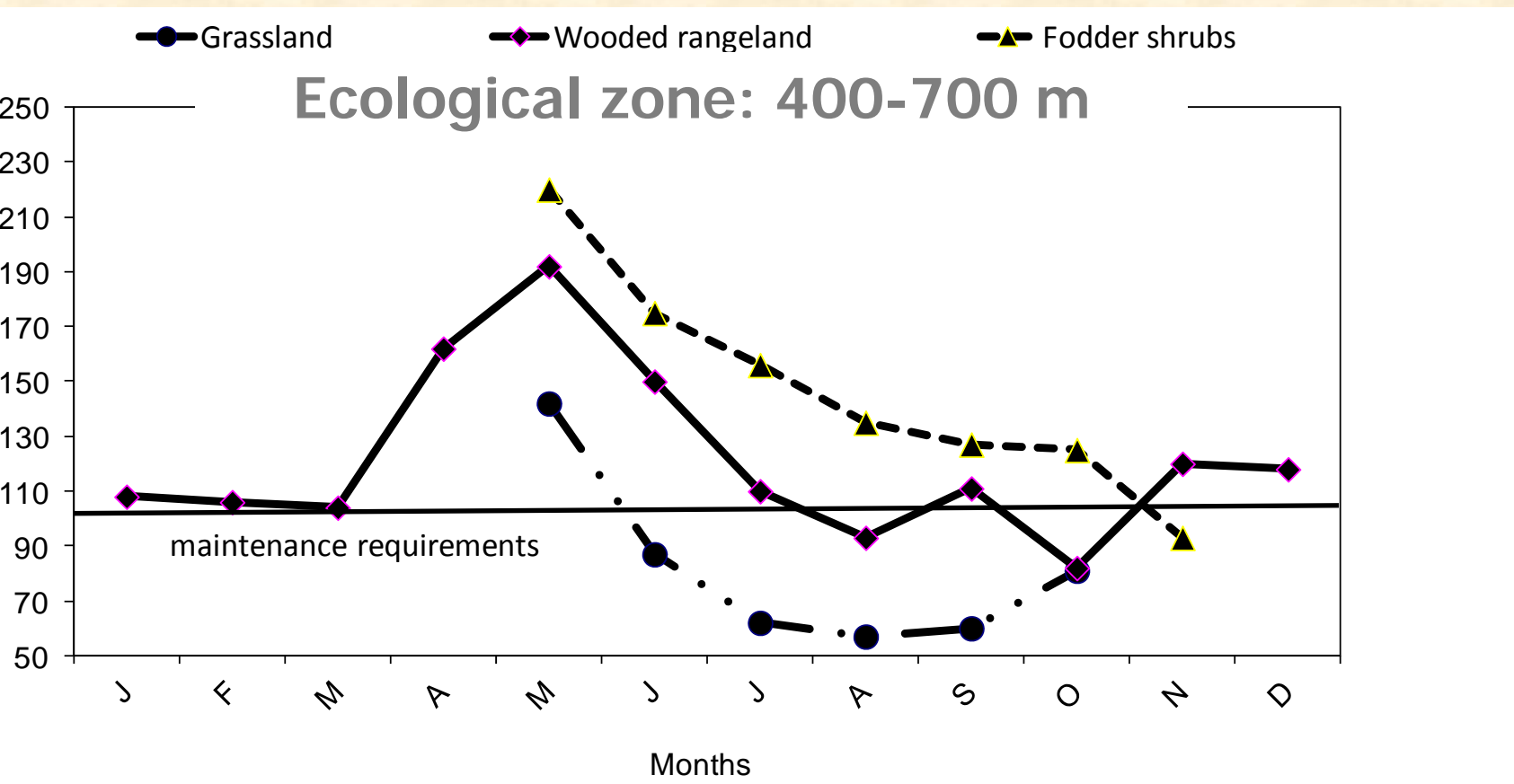
Grassland



Forest range



# Forage resource combination



# Mechanism between soils, plants, herbivores & people...

**IS**  
Products from grass-fed  
provide health benefits  
ans.  
Secondary compounds  
the meat quality and flavor  
s-fed animals?



**ores**  
ing a mixture of  
& grasses increases  
intake.  
s graze plants with  
mentary PSCs eat



## Soils

- How do plant secondary compounds affect soil health?
- How do plant mixtures affect soil health?



## Rangeland Maintenance Continuation of Life



## Plants

- The environment where a plant grows affects the primary and secondary compounds